

Bluetooth set tools use instruction

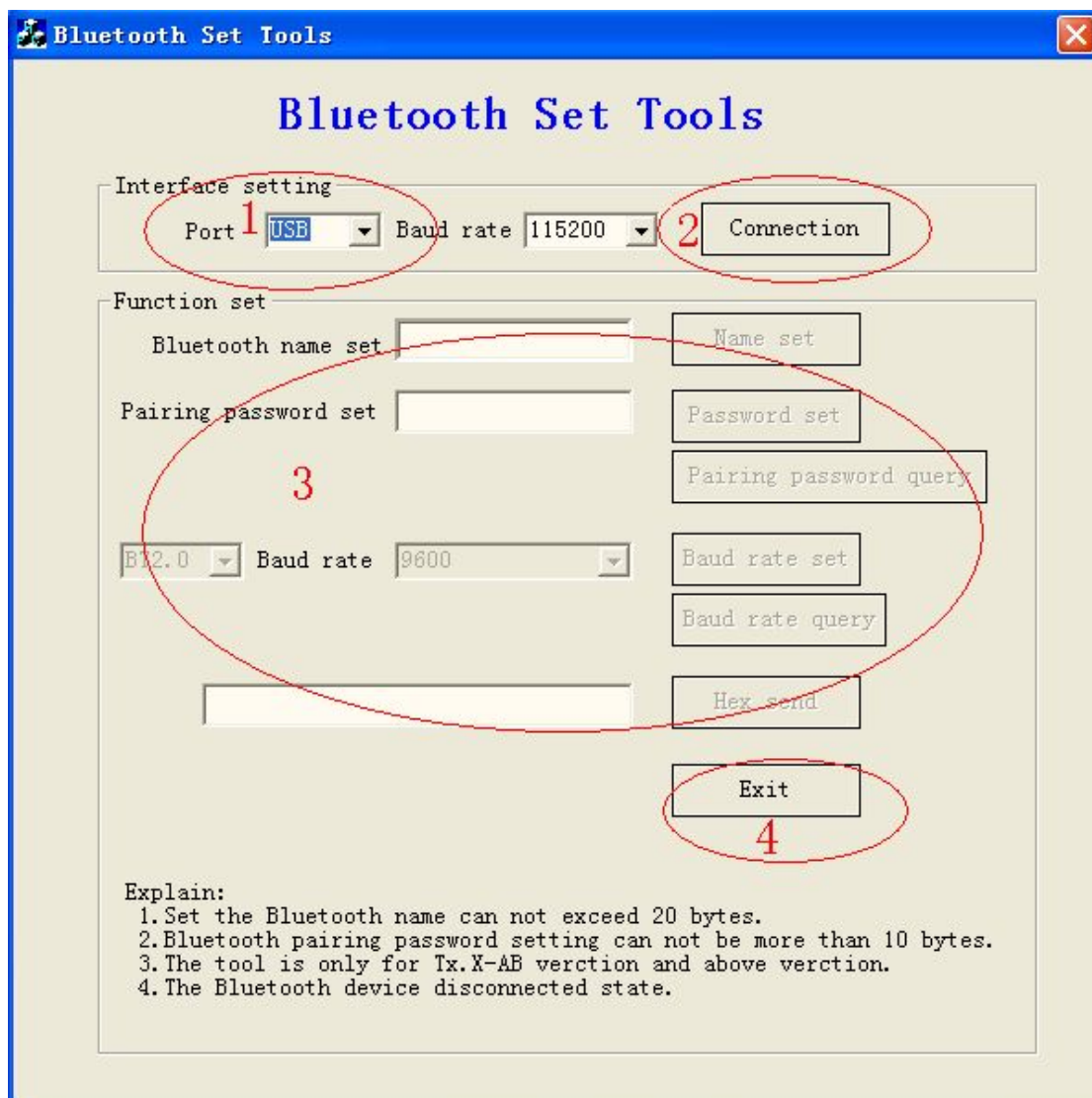
Note:

1. Set the Bluetooth name can not exceed 20 bytes.
2. Bluetooth pairing password settings can not be more than 10 bytes.
3. This tool is only for Tx.X-AB version and above version. (Check the version,you can print Selftest query the printer version)
4. When using this tool to ensure the Bluetooth device in a disconnected state.
5. Select the Bluetooth device's kind. (Single Mode:BT2.0 Dual Mode:BT4.0) ;

This tool can realize our MINI Bluetooth series printer related functions:

- 1.Modify the Bluetooth device name;
- 2.Modify and query the Bluetooth device pairing password;
- 3.Modify and query the Bluetooth baud rate;

Instructions as shown in figure:



Step 1:

Set port , please choose "USB" , the factory default printer with standard USB cable;

Step 2:

Click “Connection” ;

Step 3:

① According to the need to set up the Bluetooth printer name ,enter within the dialog ,determined to set the name ,then Click on the “Name set” ;

②According to the need to set up the Bluetooth printer pairing password ,input within the dialog ,confirmed after pairing set password ,please click “password set” ,if you want to query pairing password ,please click “Pairing password query” ;

③According to the need to set up the Bluetooth baud rate and select the Bluetooth device's kind. determined to set the baud rate, then click on "baud rate set", if you want to query the baud rate setting is correct, click "baud rate query" .

Step 4:

Set after the completion of the click “Exit” window,you can turn off the tool;